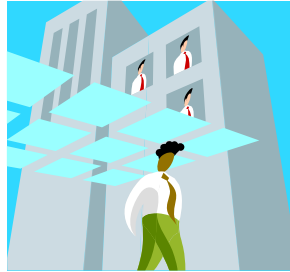


**Georgia State University**  
*Partnership for Urban Health Research*  
Institute of Public Health

**Special Presentation**



**Social Stratification, Poverty, and Health  
Disparities Among Black Adults in Chicago**

**Gregory Breeden, Ph.D., M.P.H.**  
School of Public Health  
University of Michigan

March 16, 2007  
11:00 a.m. – 12:00 p.m.  
Room 839, Urban Life Building

**Abstract:** Studies about the harmful effects of perceived racial discrimination on health have achieved some recognition in public health. Evidence suggests that those who report higher levels of perceived racial discrimination are often the same individuals who are more likely to experience adverse outcomes in poor mental or physical health. In this talk, I will explore which factors over the life course are associated with perceptions of racial discrimination in young adulthood, using data from a community sample of African Americans in Chicago followed longitudinally from age 6 to 32. I will also discuss gender differences in the relationship between perceived discrimination and marijuana and cocaine use. More broadly, however, these findings will be discussed in connection to major premises and concepts of the study of social stratification and their relevance to the study of poverty.